

# RAINBOW REVIEW

EMERALD BAY CLUB, INC.

OCCUPANT  
BULLARD, TX  
75757

PRSR STD  
CAR RT  
SORT  
PERMIT 54  
BULLARD,  
TX 75757

June 2019

### Inside this issue:

HOA Report	2-3
Club Report	4-7
Appeals Hearing	7
Financial Reports	8-10
Guidelines for RR	10
LGA	11/13
Women's Club	12
Library News	12
EB Comm. Church	14
Funatics for Kids	15/ 19/21
Junior Golf	17/36
Pokeno	18
PAWS at the Point	18
ER Benevolence	20
Yoga	20
Neighborhood News	22
4th of July	23
Golden Tees	24
Scholarships	25
Games Day	27
Plea for Help	29
MGA News	31
Club News	34



★ **SAVE THE DATE** ★

**Saturday, June 15th**

**Celebrate Father's Day**

with

**Bubba's BBQ, Beer & Bingo**

Featuring Emerald Bay's own **Jim King** as caller

**BINGO** in the West Room, 7:00pm

Cards \$2 ea or 3 for \$5

**BBQ Buffet served from 5:00pm - 8:30pm**



**EMERALD BAY CLUB HOMEOWNERS ASSOCIATION  
MONTHLY BOARD MEETING AGENDA  
MAY 16, 2019 6:00 P.M  
EMERALD BAY CLUB HOUSE - WEST ROOM**

**CALL TO ORDER****JIM INGRAM**

All board members were present with the exception of Charlie Hale and Bob Stein who had excused absences. There were 8 Emerald Bay members in attendance.

**PRAYER****SHIRLEY ROGERS****APPROVAL OF MINUTES****JIM INGRAM**

April minutes were approved as published in the Rainbow Review.

**TREASURER'S REPORT****CHARLIE HALE**

Mr. Gibb presented the treasurer report for Mr. Hale who was absent.

Total HOA operating revenue for the month of April 2019 was \$32,113 versus the April 2019 budget of \$32,550. Revenue included \$28,056 in dues plus \$4,057 in other income. Our budget had projected \$29 more in dues and \$408 more in other income.

Total operating expense for April 2019 was \$30,409 versus the April 2019 budget of \$27,969.

For the month, revenues exceeded expenses by \$1,704. So, revenue continues to run ahead of expense.

Through the first four months of 2019, our budget had projected revenue of \$125,198. Actual revenue for the first four months has totaled \$132,688, thus exceeding budget by \$7,490.

Expenses for the four months of 2019 were projected to total \$116,972. Actual expenses of \$107,293 have totaled \$9,679 less than budget.

In summary, for the first four months of 2019, HOA revenues have exceeded expenses by \$17,169.

By comparison, through the same four months of 2018, expenses had exceeded revenues by \$384.

Total cash on hand as of the end of April was \$213,040; this is up slightly from last month. Cash includes available operating funds of \$112,504, capital reserve funds of \$25,000 and capital non-reserve funds of \$75,536. Total capital is up \$1,500 from March as a result of 3 home sales during the month of April.

The HOA continues its journey back to a much stronger financial condition.

**OLD BUSINESS****NONE****NEW BUSINESS****NONE****COMMITTEE REPORTS****ARCHITERTURAL****BOB STEIN**

President Ingram presented the architectural report for Director Stein who was absent.

Construction activity continues to be strong. Please remember that any remodeling, repairs, alterations, painting, roofing, fences and waterfront improvement requires filling out an application for remodeling or new construction. Please stop by the office to pick up a form to secure a permit.

And please monitor builders, construction workers, and suppliers as they are not permitted to place any signs of advertising on construction property. Thanks for your help.

**LEGAL (NO REPORT)****CHARLIE HALE****MOWING****SCOTT ADKINS**

Mowing season is in full bloom now that the night time temperatures are remaining in the 70's.

Please remember to keep your homestead and vacant lots in the condition required by the HOA rules and regulations. Most of the vacant lots are now under contract with mowing services. The Lots on La Salle, San Mateo and Carmel will mowed this week. These lots have been too wet to mow. I've spoken with the contractors and they are on the schedule.

**PLANNING & BY-LAWS (NO REPORT)****ANNETTE CLAY****ENGINEERING (NO REPORT)****GILBERT GIBB****SECURITY****GILBERT GIBB****Security incident reports: April 19 – May13, 2019**

<b>EMS</b>	<b>3</b>
<b>House Fire (lightning strike)</b>	<b>1</b>
<b>Transformer fire</b>	<b>1</b>
<b>Weather damage, trees down</b>	<b>4</b>
<b>Missing property</b>	<b>2</b>
<b>Property damage</b>	<b>1</b>
<b>Damage to front security gate</b>	<b>2</b>
<b>Suspicious vehicle</b>	<b>1</b>
<b>Loose dog</b>	<b><u>1</u></b>
<b>TOTAL</b>	<b>16</b>

**Daily Entry Authorization (April):**

Guest	3153
Resident	1
Tenant	0
Party / Event	83
Realtor	35
Other	<u>1</u>
<b>Total</b>	<b>3273</b>

**Automatic gate activity-----22,399**

**Speeding Citations:**

Members	3
Guests	4
Contractors	5
Vendors	2
Other (employees)	<u>0</u>
<b>Total</b>	<b>14</b>

**Courtesy Patrol Requests:**

New	3
Total currently active	9

**STORAGE (NO REPORT)****RAY DEAN****DIRECTORS' COMMENTS****PRESIDENT'S COMMENTS****JIM INGRAM**

**AUDIENCE COMMENTS-**There were no audience comments

**ADJOURN 6:07**

**EMERALD BAY CLUB, INC.  
MONTHLY BOARD MEETING AGENDA  
MAY 16, 2019 6:00 P.M  
EMERALD BAY CLUB HOUSE - WEST ROOM**

**CALL TO ORDER****JIM INGRAM**

All board members were present with the exception of Director Charlie Hale, and Director Bob Stein who had excused absences. There were 8 Emerald Bay members in attendance.

**PRAYER****SHIRLEY ROGERS****APPROVAL OF MINUTES****JIM INGRAM**

Let the minutes of the April 18, 2019 Emerald Bay HOA and Emerald Bay Inc. stand corrected to state members approved as Dennis and Pamela Davis reflect corrected name of Darren and Pamela Davis.

**TREASURER'S REPORT****CHARLIE HALE**

Director Gibb presented the treasurer's report for Director Hale who was absent.

Total revenue for the month of April 2019 was \$198,841. The total is up \$1,349 from March but \$734 behind February revenue and \$8,421 behind our April budget projection.

Total expenses for April 2019 were \$196,865. This total includes normal operating expenses in the amount of \$194,488 plus \$2,377 in bad debt expense. The budgeted operating expense for the month was \$192,834; this included budgeted normal operating expenses of \$191,197 plus budgeted additional bad debt expense of \$1,667.

While operating revenue for April 2019 showed a net gain of \$1,976, we significantly missed the budgeted revenue goal of \$14,428.

Through the first four months of 2019, the Club has had total revenue of \$785,653. Budgeted revenue for the first four months was projected at \$782,971. So total actual revenue for the first four months is \$2,682 ahead of budget.

Expenses for the first four months of 2019 have totaled \$732,454 versus projected expenses for the first four months of \$776,200. So total expenses through the first four months of 2019 have been \$43,746 less than was projected.

Total revenue through the first four months is \$26,205 ahead of a year ago; total expenses are \$30,236 ahead of one year ago.

Total cash on hand at the end of April was \$970,369. This includes \$142,506 in operating funds, \$33,500 in the Upper Neches River Lease Reserve fund, \$416,723 in capital reserve funds and \$377,640 in capital non-reserve funds.

On the financial report, you will see that our 90+ day member delinquencies now stand at \$85,003.56.

**OLD BUSINESS  
NEW BUSINESS**

**NONE  
NONE**

**MEMBERSHIP****RAY DEAN**

I move we accept for stockholder membership in the Emerald Bay HOA and Club the following candidates:

Steve and Deanna Sims who are purchasing a home at 133 Williamsburg. The Sims are moving from Tyler and has many friends in Emerald Bay.

James and Marie Childress who are purchasing the Debbie and Dan Youngman's home at 107 Holly Hill Lane. The Childress are former longtime residents of Emerald Bay who are returning home after a year's absence.

Gregory and Carol Fowler who have purchased a home at 108 Lakeshore Drive. The Fowlers will continue to reside in Glenwood, Iowa, and will use the EB residence as a second home. Both of their parents live in the area.

Fonda Kunkel who has purchased the home at 105 Glen Ridge Lane. Fonda is the daughter of P.J. Taylor.

Terry and Carolyn Tennison are purchasing the Jander home at 119 Marina. The Tennison's are from Jacksonville, Texas.

Harold and Susan Suchand who will be making their home at 294 N. Bay Drive. Susan inherited the home from her parents, Jack and Anna Leah Woods.

Daryl and Lori Meeks who purchased the home at 222 N. Bay Drive. The Meeks are from Rockwall and plan to use the EB residence as a second home.

Motion seconded by Director Gibb. Motion passed unanimously.

**MOTION TO ACCEPT APPLICANTS FOR  
ADDITIONAL RESIDENT STATUS****RAY DEAN**

I move we accept the following applicants for additional resident status:

Joe Martin, who will reside at his family's residence at 126 Fairway Drive.

Kathi Rendon, who will reside at the Martin residence at 126 Fairway Drive.

Quinton Martin, who will reside at the Clary residence at 264 S. Bay Drive.

Joretta Garvin, who will reside at the Adams residence at 138 S. Bay Drive.

Billy Garvin, who will reside at the Adams residence at 138 S. Bay Drive.

Motion seconded by Director Chalender.

**Discussion:** Director Gibb asked if the additional occupants were family members. Director Dean stated mostly. Joe Martin is the grandson of Barbara and Thomas Martin and Kathi Rendon is his girlfriend. Quinton Martin is not related to the Thomas Martin family, only has the same common last name. Motion passed unanimously.

**COMMITTEE REPORTS****ACTIVITIES****BOB STEIN**

President Ingram presented the activities report for Mr. Hale who was absent.

Club Activities are heating up for the summer. We will be celebrating *Father's Day with Bubba's Bingo featuring BBQ and Beer, on Saturday June 15<sup>th</sup>*. It will be a fun time for Dad and the family. See details on the flyer in the Rainbow Review.

The *BIG July 4<sup>th</sup>* event will be packed with fun for over 6 hours starting with the Cart Parade at the new time of 3:00 p.m. Please consider decorating your cart and joining in the afternoon fun. A lunch buffet and dinner buffet will be featured, Snow Cones will be available from 5:00 and a very special, new event will also begin at 5:00 pm: Three (3) Vintage Military Planes will fly over. Be ready for some goose bumps; you won't want to miss them. And then we conclude the evening with the beautiful EBay fireworks display at 9:00 pm.

A *new Yoga Class* will be available starting in June. New time and place: The Third and Fourth Thursday of the month, beginning in June, in The President's Room from 6:00 to 7:00pm. Please see the published information for more details.

And now, new activities for the kids, the *"Fun"atics*, under the coordination of Nancy Brinson, will begin with the Saturday, June 22<sup>nd</sup> Lego Building Class in the President's Room from 10-11:30. The next *"Fun"atics* event will be a Princess Tea Party, for ages 4yrs to 7yrs in the President's Room from 2:00-3:00pm Saturday, July 13<sup>th</sup>. A second event, High Tea, will be presented for ages 8yrs and up from 3:00pm to 4:00 pm. Look for detailed flyers to follow.

#### **FOOD AND BEVERAGE**

**SCOTT ADKINS**

We appreciate the continued support from the membership. Food and Beverage sales remain strong through the month of April. We missed plan in April because we had the Crawfish Party in the budget, but that party was cancelled for 2019. Overall, we are still ahead of plan for 2019 and year over year. We will be receiving the Two-Tap Kegerator in the next few days which will allow us to double the draft beer we serve and give us the option to have local Craft beers and other selections for the members. We plan to change the selection on a monthly basis to offer lots of variety for our members. Thank you again for supporting your club.

#### **GOLF COURSE/PROSHOP**

**DENNIS ROGERS**

Warmer temperatures have arrived and the turf on the golf course is finally starting to grow. The maintenance crew has settled into their mowing schedule and the race is on to keep the course groomed.

During the second half of April, we saw a decline in the quality of turf on our greens. Because of this, we sent off some soil samples from our greens to a lab for analysis. The lab tests indicated that our greens were suffering from Pythium Crown, Root Rot, Bermuda Grass Decline, and Pythium Blight. These diseases attack the root system and the leaf tissue and are the result of too much rain. Since mid-October we have received over 55 inches of rain. Since January the rainfall total is over 26 inches with 17 inches in the last two months. The treatment for these diseases is to apply specific fungicides and to take measures to help the greens drain excess moisture. Two applications of fungicide have been applied and the greens received an aerification treatment with a solid tine. The greens appear to be responding to the treatment and new grass is beginning to fill in the affected areas. We expect to see the recover process accelerate as the sun starts to shine and the temperatures increase. Your continued patience is greatly appreciated.

The LGA hosted another successful Paradise Tournament and a good time was had by all. Thank you to all LGA members and volunteers that made the event a weekend to remember.

The last storm that rolled through the Bay took down six trees on the golf course with holes 13 through 18 experiencing the most damage. Thousands of small branches and limbs littered the course. The maintenance crew's priority is to get the course cleaned up so that the mowers can do their job without damaging the mowers. The downed trees will be cleaned up as soon as time is available.

The Pro Shop is looking into software that will allow members to book tee times online, in addition to the current call in and walkup process. More information will be provided when more information is known.

#### **HOUSE**

**CAROLYN CHALENDER**

We are moving forward with the maintenance and painting of the exterior of the club house between rain showers. Once the outside repairs and painting are complete gutters will follow.

Thank you to **the MGA, Women's Club and Golden T's** for their generous financial contribution to purchase a larger TV for the East Room.

LEGAL (NO REPORT)

CHARLIE HALE

PLANNING & BY LAWS (NO REPORT)

ANNETTE CLAY

ENGINEERING (NO REPORT)

GILBERT GIBB

STORAGE (NO REPORT)

RAY DEAN

DIRECTORS' COMMENTS NONE

PRESIDENT'S COMMENTS

JIM INGRAM

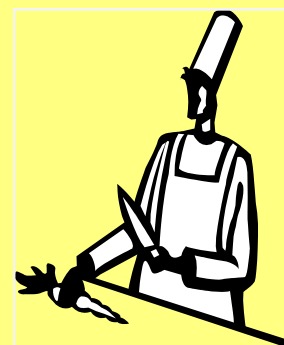
ADJOURN 6:22

AUDIENCE COMMENTS

There were not comments from the audience.



***PLEASE SUPPORT EMERALD  
BAY CLUB BY USING THE  
CLUB FACILITIES AND  
THE RESTAURANT***



**EMERALD BAY HOMEOWNERS ASSOCIATION RULES VIOLATION  
APPEAL HEARING  
May 16, 2019, 5:30 P.M  
EMERALD BAY CLUBHOUSE – WEST ROOM**

**CALL TO ORDER**

**JIM INGRAM**

The following people who were scheduled to appear before the Emerald Bay Board of Directors regarding speeding ticket appeal failed to show for their appeal time.

**SECTION vi – AUTOMOBILES AND OTHER VEHICLES (HOA),  
2). *Speed* in excess of 25 MPH, reckless driving and failure to observe Stop signs  
will be considered violations.**

Glynda Williams vendor  
Cody Heath vendor

Those who file an appeal are given time to present their appeal to the Board of Directors. The Board of Directors will review each appeal and notify appellants in writing of their decision.

Meeting adjourned: 5:32 p.m.

## TREASURER'S REPORT

### HOA FINANCIAL SUMMARY - APR 2019

#### Cash On Hand

#### Cash On Hand

	Current Year	Previous Year	Difference
Operating	\$112,504	\$160,036	
Capital Reserve Funds	\$25,000	\$25,000	
Capital Non Reserve Funds	\$75,536	\$55,798	
<b>Total</b>	<b><u>\$213,040</u></b>	<b><u>\$240,834</u></b>	<b><u>(\$27,794)</u></b>

**\*Note\*** According to the Emerald Bay Homeowners Association bylaws, operating cash can only be designated for operating expenses, and capital cash can only be designated for capital expenses.

#### OPERATING SUMMARY

	Current Month		2019 Year To Date		2018 YTD	
	Actual	Budget	Actual	Budget	Difference	Actual
<b>Revenue</b>						
Dues	\$28,056	\$28,085	\$112,541	\$112,338	\$203	\$90,905
Other	\$4,057	\$4,465	\$20,147	\$12,860	\$7,287	\$9,383
<b>Total</b>	<b><u>\$32,113</u></b>	<b><u>\$32,550</u></b>	<b><u>\$132,688</u></b>	<b><u>\$125,198</u></b>	<b><u>\$7,490</u></b>	<b><u>\$100,288</u></b>
<b>Expense</b>						
HOA	\$30,409	\$27,969	\$107,293	\$116,972	\$9,679	\$100,672
<b>Total</b>	<b><u>\$30,409</u></b>	<b><u>\$27,969</u></b>	<b><u>\$107,293</u></b>	<b><u>\$116,972</u></b>	<b><u>\$9,679</u></b>	<b><u>\$100,672</u></b>
<b>Net Operating</b>	<b><u>\$1,704</u></b>	<b><u>\$4,581</u></b>	<b><u>\$25,395</u></b>	<b><u>\$8,226</u></b>	<b><u>\$17,169</u></b>	<b><u>(\$384)</u></b>

#### CAPITAL SUMMARY

	CURRENT	YTD
Capital Funds Balance - MAR. 2019	\$99,036	
Capital from Sale of Property	\$1,500	\$5,500
Cap Dues	\$0	\$0
Capital Purchases	\$0	(\$1,931)
<b>Total</b>	<b><u>\$100,536</u></b>	<b><u>\$3,569</u></b>

## TREASURER'S REPORT

### CLUB FINANCIAL SUMMARY - APR 2019

#### Cash On Hand

Cash On Hand	Current Year	Previous Year	Difference
Operating	\$142,506	\$166,077	
Reserve-Upper Neches River Lease (335 mth)	\$33,500	\$29,480	
<b>Total Operating</b>	<b>\$176,006</b>	<b>\$195,557</b>	
Capital Emergency Reserve (Non Recurring)	\$50,000	\$50,000	
Building Reserve (capped at \$500K)	\$209,854	\$172,846	
Bridge Reserve (capped at \$50K)	\$50,000	\$50,000	
Golf Course Renovations Reserve (capped at \$500K)	\$81,869	\$68,311	
Kitchen Equipment Reserve (capped at \$25K)	\$25,000	\$25,000	
Capital Non Reserve	\$377,640	\$237,741	
<b>Total Capital</b>	<b>\$794,363</b>	<b>\$603,898</b>	
<b>Total Cash</b>	<b>\$970,369</b>	<b>\$799,455</b>	<b>\$170,914</b>

**\*Note\*** According to the Emerald Bay Club bylaws, operating cash can only be designated for operating expenses, and capital cash can only be designated for capital expenses.

#### OPERATING SUMMARY

	Current Month		2019 Year To Date			2018 YTD
	Actual	Budget	Actual	Budget	Difference	Actual
<b>Revenue</b>						
Dues *	\$125,145	\$125,749	\$501,843	\$502,996	(\$1,153)	\$482,452
Food & Beverage	\$44,513	\$50,451	\$171,086	\$173,374	(\$2,288)	\$169,940
Pro Shop	\$20,517	\$24,211	\$71,577	\$73,797	(\$2,220)	\$68,433
Other	\$8,666	\$6,851	\$41,147	\$32,804	\$8,343	\$38,623
<b>Total</b>	<b>\$198,841</b>	<b>\$207,262</b>	<b>\$785,653</b>	<b>\$782,971</b>	<b>\$2,682</b>	<b>\$759,448</b>
<b>Expense</b>						
Administration	\$35,734	\$32,014	\$134,905	\$145,825	\$10,920	\$124,370
Clubhouse	\$18,220	\$17,720	\$63,344	\$68,783	\$5,439	\$64,776
Food & Beverage	\$54,680	\$57,770	\$216,507	\$229,375	\$12,868	\$219,220
Golf Course	\$61,315	\$58,710	\$219,277	\$238,959	\$19,682	\$189,364
Pro Shop	\$24,539	\$24,953	\$82,912	\$86,590	\$3,678	\$84,886
<b>Total</b>	<b>\$194,488</b>	<b>\$191,167</b>	<b>\$716,945</b>	<b>\$769,532</b>	<b>\$52,587</b>	<b>\$682,616</b>
<b>Sub-Net Operating</b>	<b>\$4,353</b>	<b>\$16,095</b>	<b>\$68,708</b>	<b>\$13,439</b>	<b>\$55,269</b>	<b>\$76,832</b>
<b>Other Expenses</b>						
Contingency	\$0	\$0	\$3,888	\$0	(\$3,888)	\$5,907
Bad Debts	\$2,377	\$1,667	\$11,621	\$6,668	(\$4,953)	\$13,438
Bonus Pool	\$0	\$0	\$0	\$0	\$0	\$257
<b>Net Operating</b>	<b>\$1,976</b>	<b>\$14,428</b>	<b>\$53,199</b>	<b>\$6,771</b>	<b>\$46,428</b>	<b>\$57,230</b>

**CAPITAL SUMMARY**

	<u>CURRENT</u>	<u>Actual YTD</u>
Capital Funds Balance- MAR. 2019	\$829,743	
Sale on Assets	\$0	\$0
Capital from Sale of Property	\$40,000	\$120,000
Capital Dues (APR. 019)	\$13,166	\$52,796*
Refund of Initiation Fees	-\$5,000	-\$30,000
Misc Capital Income	\$0	\$0
Capital Purchases	-\$83,546	\$149,084
	<b>\$794,363</b>	<b>\$291,880</b>

\*Accrued to date less pro rated dues

**MEMBER DELINQUENCIES (90 Days and Over)**

Total: **\$85,003.56**

**\*\*\* Reminder \*\*\***

Please remember to pick up after your dog when you are out for a walk whether in your neighborhood or out at the point!!

**Be considerate to others!**

**Guidelines for Letters to the Editor**

Members have recently submitted letters or articles for publication in the Rainbow Review. In order to be fair to all, the Editor has developed a set of criteria that will be used to evaluate material submitted for publication. Articles should be composed as "Letter to the Editor" as , Board Sponsor, by email: **chalender@yahoo.com**

Hard copies will not be accepted. Guidelines follow:

1. Letters should discuss matters that are relevant to a majority of the membership and must identify the author.
2. Editor reserves the right to edit letters in local newspapers. Letters must be sent to Carolyn Chalender for accuracy, clarity and length. Comments 250 words or fewer have the best chance of being published. There is no guarantee that all letters will be published.
3. No letters will be published that impugn the character of veracity of individual members of the club.
4. Members are reminded that complaints, if any, about staff are to be channeled directly and confidentially to the general manager. Complaints or criticisms of staff will not be published.



**Carolyn Chalender**  
Board Sponsor  
**chalender@yahoo.com**

**Barbara Baker**  
Publisher & Editor  
**btbaker74@gmail.com**

Emerald Bay Club, Inc., does not guarantee the accuracy of any representation contained in any article or advertisement in the publication.

Any comments and/or suggestions regarding editorials should be addressed to **Carolyn Chalender**

**Any advertising in this publication should be addressed to:**

Cindy Philpott  
903-825-3388  
**arclub@emeraldbayclub.org**

**Articles should be submitted to Barbara Baker by the 20th of the month.**

# Emerald Bay LGA

# What's Happening

## June

**LGA Social** – June 5<sup>th</sup> – Patio 5:00-7:00 PM

**Paradise Golf Tournament** – The tournament was a huge success. Thanks to everyone that played or volunteered. We are looking for Chairperson/s for next year. If you are interested, contact Melissa McElveen @ 936.635.8241.

**Junior Golf Camp** – June 18<sup>th</sup> – 21<sup>st</sup>. Please volunteer – sign up in the Pro Shop.

**LGA Play Days** - Time for fellowship through the game of golf. Please join us!!

- Open to all skill levels; players with handicaps over 30 will have the option to play from the family tees. In many instances, players can opt to play, 3, 6, 9 or 18 holes. Other games will be team based.\*

Saturday, June 1<sup>st</sup> – Surprise team event.

Thursday, June 6<sup>th</sup> - TBD

Thursday, June 13<sup>th</sup> – Afternoon Play Day – tee time will be 5:30 pm – 9 holes or other format

Thursday, June 20<sup>th</sup> - No Play Day – Junior Golf Week

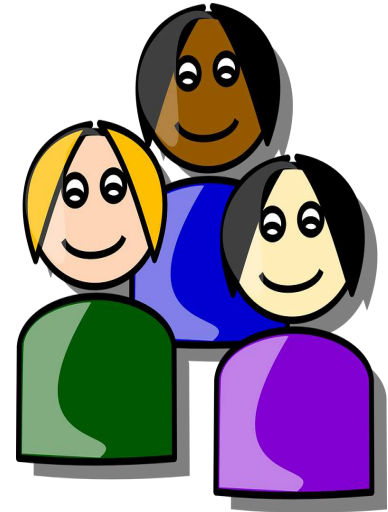
Thursday June 27<sup>th</sup> - TBD

Details of each game will be provided at the Play Day.

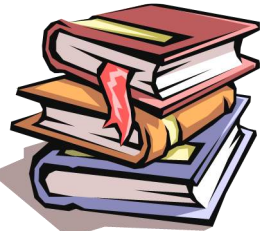
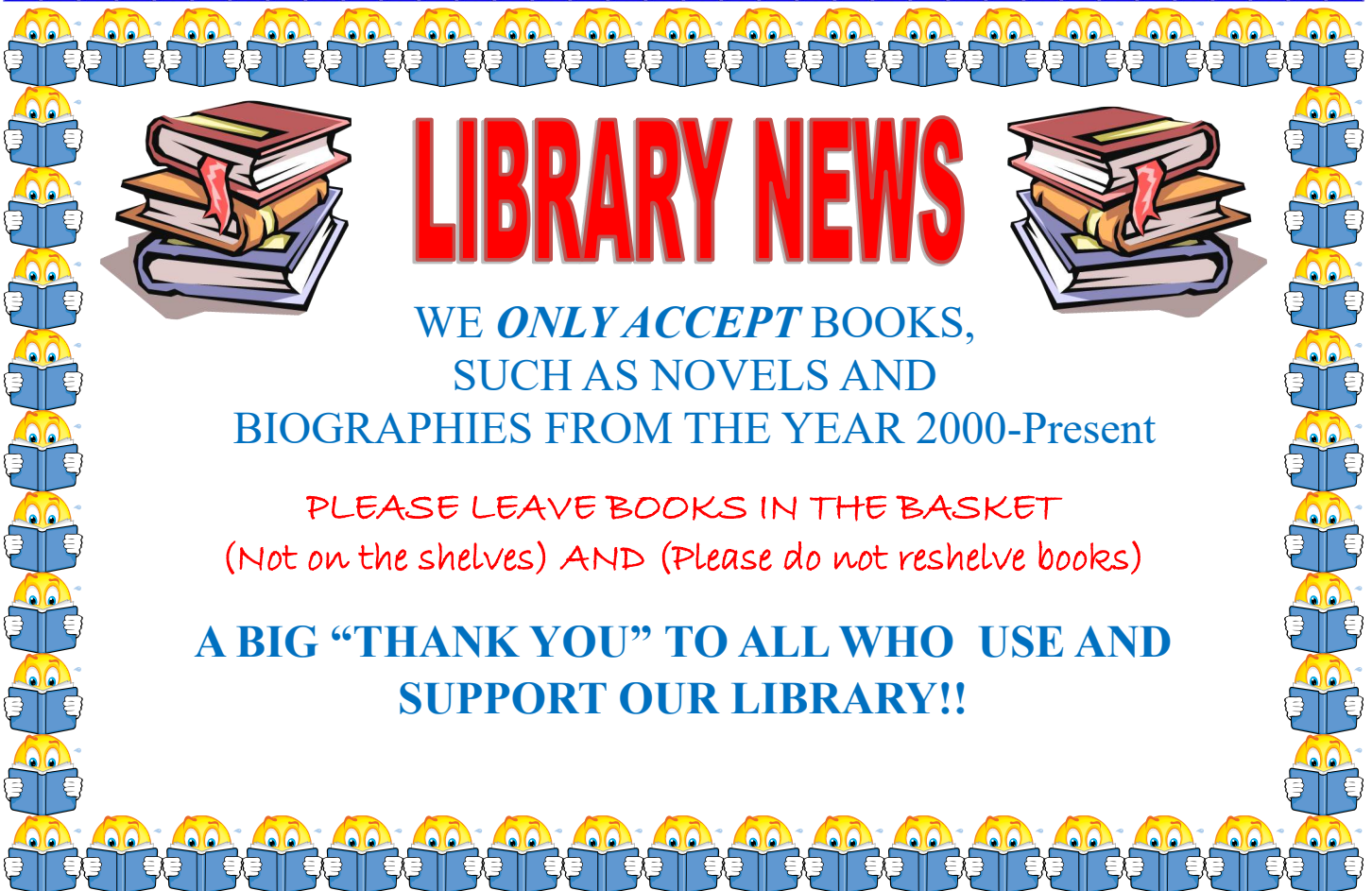
*\*If your foursome would prefer to play a scramble that is always an option.*

## Emerald Bay Women's Club

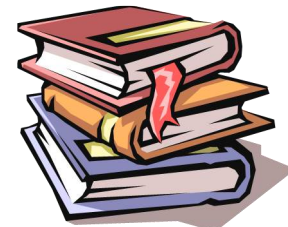
Women's Club is a social club with ties to the Emerald Bay Benevolence Foundation. We meet on the 2nd Wednesday of the month from September through May, 11:00-1:00. We enjoy lunch and a special event each month.



If you are new to Emerald Bay or a previous member and are interested in joining, please contact Cindy Harvey @ 825-3719



## LIBRARY NEWS



WE *ONLY ACCEPT* BOOKS,  
SUCH AS NOVELS AND  
BIOGRAPHIES FROM THE YEAR 2000-Present

PLEASE LEAVE BOOKS IN THE BASKET  
(Not on the shelves) AND (Please do not reshelve books)

A BIG "THANK YOU" TO ALL WHO USE AND  
SUPPORT OUR LIBRARY!!

# **“SAVE THE DATE”**

## *LGA SOCIAL*



*TIME TO KICK OFF SUMMER WITH  
THE FIRST ANNUAL LGA PATIO  
PARTY!!!*

*WEDNESDAY JUNE 5, 2019  
EMERALD BAY CLUBHOUSE PATIO*

*5:00-7:00*

*FROZEN SANGRIAS AND  
HORS D'OEUVRES*

*Dress: Summer Casual*

*\*Signup sheet is on the bulletin board in the Pro Shop.  
Please sign up by Monday June 3<sup>rd</sup> so we know you're  
coming.*

# Emerald Bay Community Church



**Dr. Darryle Dunks,  
Pastor**

**Sunday Worship Service - 9:00 a.m.  
Sunday Bible Class - 10:15 a.m.**

**Women's Bible Study - 10:00 a.m. Mon.  
Men's Bible Study - 8:00 a.m. Thurs.**

**Everyone Welcome!**

160 La Salle Road, Bullard, TX 75757

Office hours: 8am-12pm Mon.-Fri.

[www.emeraldbaychurch.org](http://www.emeraldbaychurch.org)  
[facebook.com/emeraldbaychurch](https://facebook.com/emeraldbaychurch)  
903-825-3642

## VACATION BIBLE SCHOOL IS COMING!

**Registration Open Now!**

***Register by May 31<sup>st</sup>!***



### Children:

**When: June 10–14<sup>th</sup> (M-F), 9:00 a.m. to Noon**

**Ages: Pre-K (age 4) through Grade 6 (completed)**

### Youth:

**When: June 9-12<sup>th</sup> (Sun-Wed), 6-8p.m.**

**Ages: Grade 7 (completed) and up! Can also  
volunteer as youth helpers during the day**

**Registration forms are available in the Rainbow Review, from the church office,  
and on our website. One form for each child or youth, please!**

Call 903-825-3642 or email [office@emeraldbaychurch.org](mailto:office@emeraldbaychurch.org) for more info!



Do you love icing, whipped cream & sprinkles????  
Well the “FUN”atics will be hosting a baking class on  
Saturday June 8<sup>th</sup> from 10:00am – 11:00am.

Mrs. Joyce Shipp will be guiding us and sharing her  
special secrets and tips on the art of cake design.  
This event is for ages 4 – 14 and the cost is \$5.00  
per person. You may rsvp to  
[arclub@emeraldbayclub.org](mailto:arclub@emeraldbayclub.org). The deadline for sign-  
up is June 6<sup>th</sup> @ 5:00pm .





**PATRIOT**  
**ELECTRIC SERVICES**

Let's Build a Brighter Future

**903-954-2525**

Flint, TX  
TECL18353



**PATRIOT**  
**ELECTRIC SERVICES**

---

Residential Electric  
Repair & Replacement

Surge Protection

Generators

USB Outlets

---

[patriotelectricservices.com](http://patriotelectricservices.com)

Like us on Facebook

## Junior Golf Camp Schedule of Events

**Dates: June 18th-21st 2019**



When	What & Where	Additional Information
<b>Tuesday</b>	<b>Registration - West Room</b>	
		Ages 6-8 (8:00- 8:25)
		Ages 9-11 (9:15-9:40)
		Ages 12-15 (10:30-10:55)
	<b>Golf Etiquette, Putting and Chipping Instruction - President's Room, Putting and Chipping Green</b>	Ages 6-8 (8:30 - 9:30)
		Ages 9-11 (9:45 - 10:45)
	Ages 12-15 (11:00 - 12:00)	
	<b>Free Swim</b>	All (1:00 pm - 5:30 pm) - <i>please note that swimsuits/cover-ups are not allowed in the Clubhouse</i>
	<b>Hot Dog Dinner - Patio Sign up at registration</b>	All (5:30 - 6:30 pm) - <b>cost is not included in Registration Fee.</b> Hot dog, chips and drink for approximately \$6.75 (includes tax and gratuity); additional hotdogs will be available for reduced price
<b>Wednesday</b>	<b>Instruction - Driving Range</b>	Ages 6-8 (8:30 - 9:30)
		Ages 9-11 (9:45 - 10:45)
		Ages 12-15 (11:00 - 12:00)
	<b>Movie - West Room - Sign up at registration</b>	(6-11 yr olds) 2:00 pm - refreshments will be provided
	<b>Pickle Ball for 12-15 yr olds - Sign up at registration</b>	(12-15 yr olds) 4:00 pm - tennis courts
<b>Thursday</b>	<b>Instruction - Driving Range</b>	Ages 6-8 (8:30 - 9:30)
		Ages 9-11 (9:45 - 10:45)
	<b>Drive, Chip and Putt Competition</b>	Ages 12-15 (11:00 - 12:00)
	<b>Jr. Golf Scramble - Sign up at registration</b>	Meet by putting green at 2:30 pm - 3:00 shotgun start
<b>Fun Day - Wrap Up</b>	<b>Instruction - Driving Range</b>	
		Ages 6-8 (8:30 - 9:30)
		Ages 9-11 (9:45 - 10:45)
	Ages 12-15 (11:00 - 12:00)	
<b>Award Luncheon - West Room - Sign up at registration</b>	<b>Friday</b>	All groups - 11:30 am- Cost for Junior Golfers is included in the Registration fee. Family members are welcome to join for an additional charge between \$8.50-\$9.5-per person (includes tax and gratuity)
<b>Friday Night Scramble</b>		All Junior Golfers are welcome to play (5:30 start) - sign up at registration



# pokeno Ladies Night Out



1st  
Thursday  
of the  
month



6:00-8:30

Appetizers-\$6.50

Bring wrapped gift \$10.00

Bring \$5.00 for the final Blackout game!!

Happy hour prices on house wines,  
draft beer and well drinks



## Paws at The Point

Does your dog appear restless lately? Does he seem bored? Is it cabin fever?

Then come join us at The Point! We are dog owners too. We call ourselves "Paws at The Point."



We take our dogs daily to socialize, exercise and play with their dog buddies. Plus, we get to visit with our neighbors and meet new friends!

Come from 5:00 to 7:00.

Of course, there are dog baggies for us to pick up after our pets.

Come join us, but be forewarned, our dogs let us know at home when its time to go. They love it so much they want to go again!!!





*Save the Date*

*Saturday, July 13th, 3:00pm – 4:00pm*

*The "Fun"atics will be hosting*

*High Tea*

*For ages 8 years and up*

*Come share tea & cookies with friends*

*in the President's Room*

*More Information Coming Soon!*

## Gift Giving Idea

Need a gift for the person who has everything and wants nothing?

Make a donation in their name to the

*Emerald Bay Benevolence Foundation*

OR

Honor a loved one, "Just because" with a donation in their name to the

*Emerald Bay Benevolence Foundation*



**YOGA IS RETURNING.**

It will be on the 3<sup>rd</sup> and 4<sup>th</sup> Thursday of each month starting in June.

**NEW time: 6:30 pm**

**Cost is \$3.00 per session**

**YOU'RE INVITED  
TO A  
TEA PARTY**

Save the date

Saturday, July 13th, 2:00pm - 3:00pm

The "Fun"atics will host a

**Princess Tea Party**

for ages 4 -7

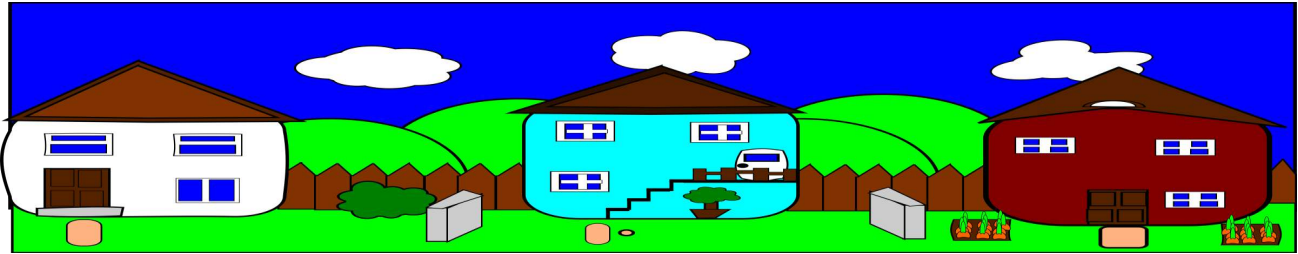
guests are encouraged to dress in costume

juice & cookies will be served



More information  
coming soon!





## NEIGHBORHOOD GROUPS

### MONTICELLO SUPPER CLUB

Residents in the Monticello area meet for supper on the second Tuesday of each month. Any persons living near Monticello Lane are welcome and invited to attend. Members of the group take turns hosting the meal, which may be at the club, at their home, or at a restaurant of their choice. For information contact:

Dicksie Walker, [dwalker@evansair.net](mailto:dwalker@evansair.net) or

Kathy Miller, [miller111@nctv.com](mailto:miller111@nctv.com)

### WILLIAMSBURG LANE, PARK RIDGE AND ST. CROIX

The residents of Williamsburg Lane, Park Ridge and St. Croix will meet on the 3<sup>rd</sup> Tuesday of the month for dinner and visiting. For information contact:

Gigi Gibb, [jeanne@gibbagency.com](mailto:jeanne@gibbagency.com) or

Becky Kirkpatrick, [tylerkirks@yahoo.com](mailto:tylerkirks@yahoo.com).

### SINGLES

We will meet on 4th Tuesday night at 6:00 for dinner and visiting. If you don't get a call about a reservation, call Shirley Rogers @903-825-3621 or email: [ebladybug18@juno.com](mailto:ebladybug18@juno.com) to make a reservation.

### Neighborhood Groups

Information pertaining to neighborhood groups can be sent to Barbara Baker, at [btbaker74@gmail.com](mailto:btbaker74@gmail.com)

# INDEPENDENCE BUFFETS

*-No Menu Service All Day-*

11:00 am—3:00 pm

## All American Buffet

Burgers, Hot dogs, Chips and Cookies

\$11.95 Adults /

\$7.50 Kids 12 and Under

5:00 pm—8:00 pm

## BBQ Dinner Buffet

Sliced Smoked Brisket, Smoked Sausage and Delicious BBQ

Chicken served with yeast rolls,

potato salad, corn on the cob

and banana pudding

\$14.50 Adults /

\$7.95 Kids 12 and Under

Reserve Now (903) 825-3388 Ext.0

or email: [arlub@emeraldbayclub.org](mailto:arlub@emeraldbayclub.org)

# HAPPY 4<sup>th</sup> of JULY in Emerald Bay

## RED WHITE & TRUE BLUE SPORTS FAN

# Golf Cart Parade

Registration & Judging

3:00 pm

Parade Begins

3:30 pm

The 2019 Theme is “Red, White & True Blue Sports Fan”

Decorate your cart, your bike or pet to show your Team Spirit!

Registration will be at the west parking lot of the Clubhouse.



# VINTAGE MILITARY PLANE FLYOVER

Feel the excitement of seeing vintage planes flying over the Clubhouse!

@ 5:00 pm

## Snow Cones by Kona Ice

5:00 pm—8:00 pm

Front Drive of the Clubhouse

## Patriotic Music Playlist

—WTBLINK WILL BE PROVIDED WITH TIME TBA

# Fireworks Display @ Dark

Our Fabulous Bay Fireworks Display will be between the South Bay Bridge and #10 tee areas. The bridge will close approximately 30 minutes before the show. You may park your carts on the range or near Hole 18. Please do not drive your carts across the greens or into bunkers.



## Golden Tee Golfers

Play 9 holes

Tuesdays & Fridays @ 8:30 p.m. tee times

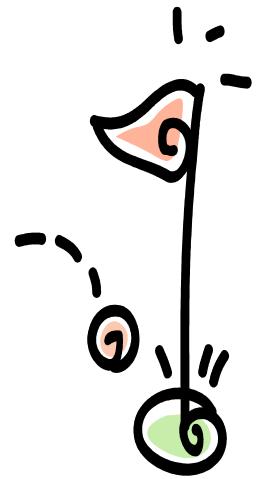
Cost to play is \$1.00

Check in time is no later than 8:15 p.m.

First time players,  
the annual dues is \$25.00

If you have questions, call:

Robert Lewis 903-574-4950



## The Emerald Bay Speed Limit is

# 25 MPH

IT IS IMPERATIVE THAT YOU DRIVE AT NO MORE THAN  
25 MILES PER HOUR WHILE IN EMERALD BAY

**THIS IS A SAFETY WARNING TO FOLLOW**

**The SPEED LIMIT or FINES WILL BE IMPOSED.**

Speed in Excess Of Posted Limit	1st Violation	2nd Violation	3rd Violation
1 - 5 MPH	\$ 100.00	\$ 125.00	\$ 175.00
6 - 10 MPH	\$ 125.00	\$ 150.00	\$ 200.00
11 - 15 MPH	\$ 150.00	\$ 175.00	\$ 225.00
16 - 20 MPH	\$ 175.00	\$ 200.00	\$ 250.00
21 + MPH	\$ 200.00	\$ 225.00	\$ 275.00

**Your cooperation is appreciated.**

# Emerald Bay Gives to Bullard High School Students



The Jan Verzosa  
Scholarship from  
Emerald Bay  
Benevolence  
Foundation

Emerald Bay  
Scholarship  
Foundation



# Gibb Insurance Agency

**25 years** experience saving clients money on their **insurance**.

We are an **INDEPENDENT INSURANCE AGENCY**. What does that mean for you? It means we will shop multiple companies to find the right coverages at the best price. We can quote all your insurance needs. Home, Auto, Boats, RV's, Motorcycles, Jet Skis, even Health, Life or Long Term Care.

We have some home companies that give up to a 25% discount for living in Emerald Bay.



903-561-0009      Gilbert Gibb

## Call and Save!

**EMERALD BAY  
BENEVOLENCE FOUNDATION**

**GAMES DAY  
JULY 24, 2019  
11:00 to 3:30**

**SIGN UP  
TODAY!**



BRING YOUR  
OWN GAMES



**\$30.00**

**LUNCH PROVIDED**

**CASH BAR**



**CASH  
OR CHECK  
ONLY**



***SILENT AUCTION***

ALL PROCEEDS GO TO:

The Emerald Bay Benevolence Foundation

**RESERVATIONS REQUIRED**

**FOR RESERVATIONS CALL:**

**BARBARA BAKER**

**903-805-8576**

**You may pre-pay by using  
the registration card at the back  
of the Rainbow Review**

**RESERVATION DEADLINE  
JULY 19, 2019**

Our office lists & sells more Lake Palestine properties than any other office!

I live here and work here! Let me put my knowledge and experience at Lake Palestine to work for you!

I'm a member of 6 MLS's including Greater Tyler, DFW, Houston, Austin, Henderson County & Palestine, in addition, to advertising on numerous websites! Your property is seen by thousands of realtors and their buyers when you list with me!

Call or Text me today at 903-724-2477  
& let me show you how our focus on marketing can work for you!



Dana Staples, Broker  
Accredited Luxury Home Specialist



**Staples  
Property  
Group LLC**

7500 State Hwy 155  
Frankston, TX. 75763  
uclakepalestine.com

**VERA, VERA  
HAPPY TO BE  
YOUR BANK!**

"EMERALD BAY IS MY HOME,  
LET ME HELP MAKE IT YOURS."



**Kim Page**  
Vice President  
Mortgage Lending  
NMLS #580538  
p: (903) 509-0400 EXT 7516  
kpage@verabank.com  
Tyler - Grande  
2217 W. Grande Blvd.  
Tyler, TX 75703



**VERABANK**

verabank.com | Member FDIC

## Bullard Mission House

Accepting ladies, men and children's clothes.

Open to serve clients:  
3rd and 4th Wednesdays 9-12

### WANT TO HELP??

Meet Mondays at 2 p.m. to fold and hang clothes. Just show up...no need to call.

For more information  
Contact: Katherine Bunce

903-894-3055

somatt2@yahoo.com

## Got Kidney?

My name is Fred Saffold. I live at 131 Fairway Drive. I am in need of a kidney transplant, and I want to let my Emerald Bay neighbors know about my condition and ask for your help.

I started receiving kidney dialysis in Tyler 3 ½ years ago. I receive treatments 3 days a week; I'm hooked up to the machine for four hours. By the time I travel to and come home, I've spent most of the day; and, when I do get home, I'm often very tired. Being on dialysis is physically and emotionally draining.

Before dialysis, I was active in our community, having served as Treasurer, usher, and in the Sound Booth at Emerald Bay Community Church, enjoying golf with the Golden Tees playing duplicate bridge, and volunteering time and support to my wife's endeavors as the Emerald Bay Community Church Music Director. But dialysis has taken its toll on my strength and stamina, and frighteningly, statistics reveal that the average life expectancy for a patient on dialysis is generally five years.

I desperately need a kidney transplant. In a recent conversation with my transplant coordinator, I was informed that due to my age (77), I will probably not qualify for a deceased donor; as a result, my only hope for a transplant is via a living donor.

For your info, most people can donate who don't have high blood pressure, diabetes, or cardiac problems. Here's some other information about kidney donation:

- **We are born with an extra kidney – you only need one to live a full, healthy, long life.**
- The majority of the donor surgery is done laparoscopically, with tiny incisions.
- The recuperation period is generally 2 weeks for those with a desk job and 6 weeks for those whose job entails heavy lifting.
- All medical expenses would be paid by my insurance benefits.
- Most donors say if they had another extra kidney they would donate again in a heartbeat and that it is one of the best experiences of their life.

Would you please pray about it, search your heart, and consider being my kidney donor or saving my life? I'll be happy to send you an information packet that will help you make a well-informed decision. Or, you can learn more by going to this website:

**[www.kidney.org/livingdonation](http://www.kidney.org/livingdonation)**.

Thanks for your friendship, support, and concern. I hope to hear from you soon!

Sincerely yours,  
Fred Saffold  
903-825-9123

# The Cart Barn

Between Emerald Bay and Brookshire's on FM 344 W

The Cart Barn is a licensed EZGO dealer.  
We have access to genuine EZGO parts.



We also sell and service new and used Club Car, Yamaha, and Star golf carts.

## Accessory Sale:

Sunbrella Track Style Enclosure \$600  
Lazy Life Custom Seats starting at \$400

## Golf Carts For Sale

2015 Yamaha Drive w/LED lights: \$3,295  
2015 EZGO TXT 48: w/LED lights, SOC meter & USB ports \$3,295  
2015 Club Car Precedent new batteries, lights, custom seats, ties, & wheels \$3,795

## Golf Cart Batteries For Sale



Join our Annual Maintenance Program and allow us to keep your cart in good condition. AMP members also receive reduced rates on labor charges. For more information or to sign-up call 903-825-3416 or email me at [drogers@cartbarn.net](mailto:drogers@cartbarn.net).

## Emerald Bay Benevolence Foundation Supports Breckenridge Village



## Grand Opening of 3 New Homes!!

Barbara Baker and Nora Lundeen (EB Benevolence Board Members)  
Larry Lummus (BVT Board Member)

## MGA News

Dodging spring storms 41 players competed in individual play for the year's first tournament that will count towards Players Cup points. Congratulations to the winners. The next MGA tournament will be a two day Member/Member - Member/Guest to be held June 8<sup>th</sup> and 9<sup>th</sup>.

Congratulations to the winners of the Paradise tournament. Even though the course was somewhat saturated from the continuous spring storms play was completed on time. Patty Purcell and her team could not have done better in putting it altogether. Also special thanks to the generosity of the sponsors and the golf course staff for making it all possible

The Champagne Member/Guest entry form registration will be held June 6<sup>th</sup> from 9:00 A.M. to 11:00 A.M. Registrations stations will be set up for teams: Blue/Blue, Blue/White, White/White, and Blue/White/Gold.

Because of this year's wet spring the course needs to be protected. You can make a difference in its condition. When taking a divot please fill it in plus two more and don't forget to repair ball marks on the green. Observe the signs and when its cart path only, take your sand bottle with you when walking to the ball.





# CORNERSTONE

## B R O K E R A G E

Office: 903-581-4141 ♦ Fax: 903-581-4001  
 2104 W. Grande Blvd., Ste. 100 ♦ Tyler, TX 75703



**Terrie King**  
 Realtor  
 903-530-2812  
[terrieking@yahoo.com](mailto:terrieking@yahoo.com)

*Summertime is always the best of what might be.*

Call your New Emerald Bay neighbor, Terrie King for your real estate needs.



**Andy Guinn**  
 Realtor/Broker  
 903-531-7484  
[andyguinn@gsocal.com](mailto:andyguinn@gsocal.com)

### Emerald Bay Benevolence Foundation

501(C)3 Charity  
 Servicing local area & Emerald Bay

Make a donation in memory of a loved one or in honor of someone dear to you

Contact Cathy Wright  
 825-3048

Supported by Emerald Bay Women's Club

## Don't Litter



Please remember to pick up your cigarette and cigar butts.



### Continuous Color Cosmetics

*"You'll love your permanent make-up"*



*professionally performed in a private setting by  
Ginger Worsham-Voorheese,  
RN, ICT  
903-530-3533*

*Specializing in Eye, Lip & Brow Line and Color*

### St. Joseph's Place

## Estate Sales

Buy Outs

**(903) 330-0446**

Bay References

### Shawn Carr

Air Conditioning & Heating Service

**903-747-2108**

**Handyman Services  
Home Maintenance**

TX License #B58878E

### Steve the Handyman

**903-258-0324**

Electrical work Plumbing

Fence repair

No Painting



Why List Your Home with

**PUG NICKEL**

**903.216.5157**



**EXPERIENCE!**

**37 years** involvement in well over a thousand real estate transactions. I have been a real estate **salesman** , a real estate **broker** and the **owner** of a real estate firm. You may count on me to tell the **truth** like it is ... about the saleability of your home, what actions can improve curb and sales appeal, and the price you can reasonably expect to





**2019 EMERALD BAY CLUB JUNIOR GOLF CAMP REGISTRATION FORM  
TUESDAY, JUNE 18th THROUGH FRIDAY, JUNE 21st**

**INSTRUCTION TIMES**

8:30 a.m. – 9:30 a.m.  
Ages 6 (by Sept.) – 7

9:45 a.m. –10:45 a.m.  
Ages 8 -10

11:00a.m.-12:00  
Ages 11 -15

The fee is \$45.00 per Jr. Golfer. There are additional charges for the Hot Dog Dinner on Tuesday. You may charge the fee to your member account or pay by check. Make your **CHECK** (no cash) payable to: EMERALD BAY CLUB, INC. with Jr. Golf written in memo at bottom. Turn this form along with the registration fee to the Pro shop by the registration dead line of ***June 1st.***

The range can be used by the junior golfers without charge through Friday.

If you have questions, please contact the Pro Shop, Kathy Miller (903-710-2118) or Merry Sandra Kennedy (252-367-2038). A summary of the camp schedule is provided below. A detailed schedule of events will be provided later.

**FILL OUT THE BELOW INFORMATION FOR EACH JUNIOR GOLFER**

JR. GOLFER'S OR ALUMNI'S NAME \_\_\_\_\_ AGE \_\_\_\_\_ M/F \_\_\_\_\_

EMERALD BAY SPONSOR'S: NAME \_\_\_\_\_  
CONTACT NUMBER \_\_\_\_\_

ANY PROBLEMS THE PRO OR VOLUNTEERS NEED TO KNOW? \_\_\_ Yes or No (circle one)\_\_\_

(Explanation if yes) \_\_\_\_\_

I AGREE TO HOLD EMERALD BAY CLUB HARMLESS FROM ALL LIABILITY AND TO FULLY INDEMNIFY THEM FROM ANY CLAIM OR DAMAGE.

Member's or Parent's signature

Cut here and retain for reference

Camp Summary – Sign up for activities at Registration

Day	Golf Instruction	Additional Activities
Tuesday	1 hr of instruction per day for each age group	Free swim and hot dog dinner* on the Patio
Wednesday		Movie (ages 6-10) & Pickleball (ages 11-15)
Thursday		Jr Golfer Scramble
Friday		Awards Lunch and Friday Night Scramble

\* Additional Charge for hot dog dinner



**Emerald Bay Benevolence Foundation  
2019 GAME DAY FUNDRAISER  
Lunch & Silent Auction  
July 24, 11:00 to 3:30**

ENTER YOUR MAH JONGG (4), BRIDGE(4), OR ANY OTHER GAME (2+) GROUP HERE  
(Circle which game you will play) and mail with your \$30 check to 119 Fairway Drive, Bullard, 75757 by  
July 19

NAME \_\_\_\_\_

NAME \_\_\_\_\_

NAME \_\_\_\_\_

NAME \_\_\_\_\_

**ALL PLAYERS NEED TO FURNISH THEIR OWN GAMES, MAH JONGG SETS, AND CARDS**  
SCORE PADS AND PENCILS WILL BE PROVIDED

FOR MORE INFORMATION CONTACT  
**BARBARA BAKER AT 903-805-8576**

**ADVANCE RESERVATIONS REQUIRED**

**Emerald Bay Benevolence Foundation  
2019 GAME DAY FUNDRAISER  
Lunch & Silent Auction  
July 24, 11:00 to 3:30**

ENTER YOUR MAH JONGG (4), BRIDGE(4), OR ANY OTHER GAME (2+) GROUP HERE  
(Circle which game you will play) and mail with your \$30 check to 119 Fairway Drive, Bullard, 75757 by  
July 19

NAME \_\_\_\_\_

NAME \_\_\_\_\_

NAME \_\_\_\_\_

NAME \_\_\_\_\_

**ALL PLAYERS NEED TO FURNISH THEIR OWN GAMES, MAH JONGG SETS, AND CARDS**  
SCORE PADS AND PENCILS WILL BE PROVIDED

FOR MORE INFORMATION CONTACT  
**BARBARA BAKER AT 903-805-8576**

**ADVANCE RESERVATIONS REQUIRED**